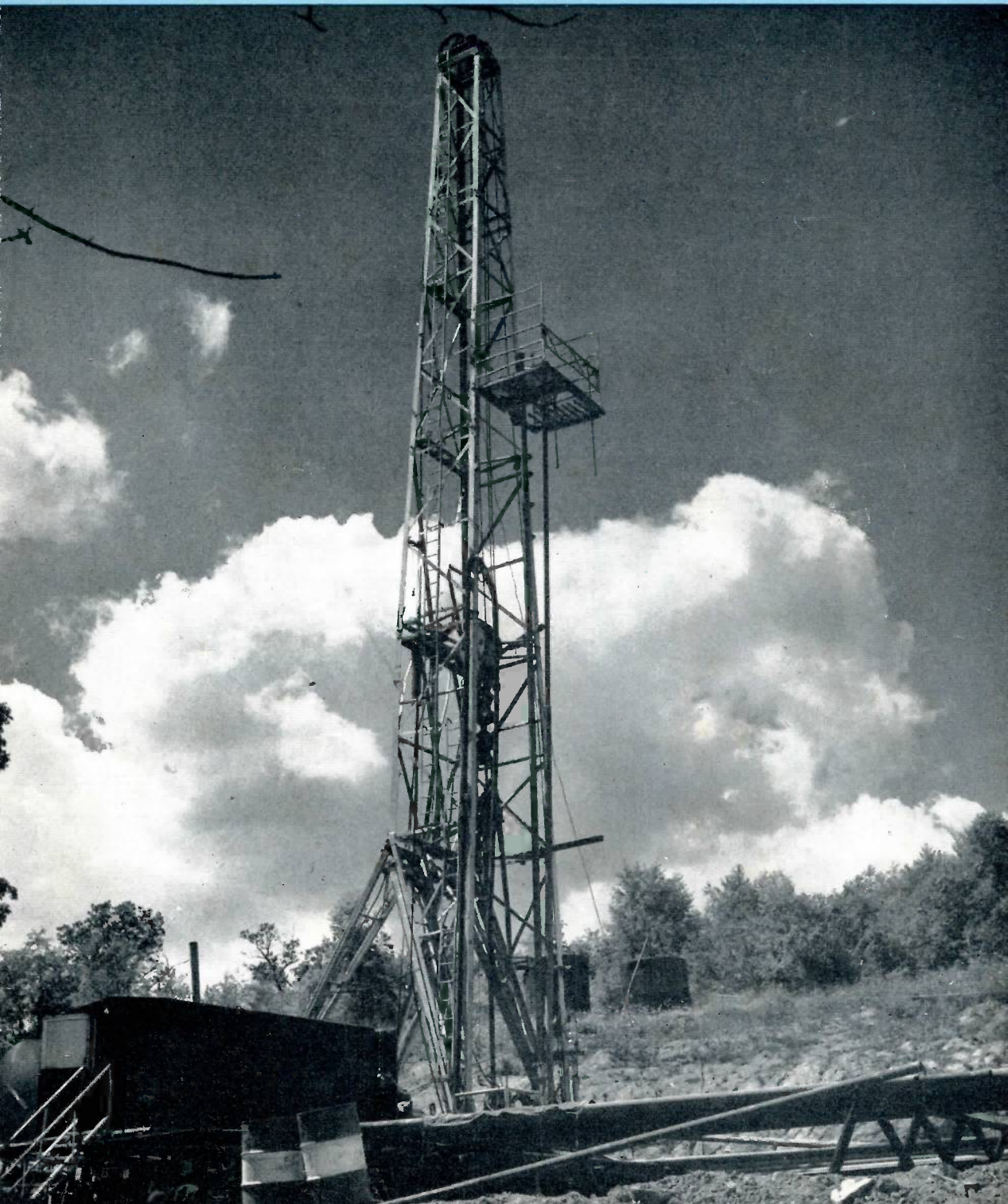


MUELLER *Record*

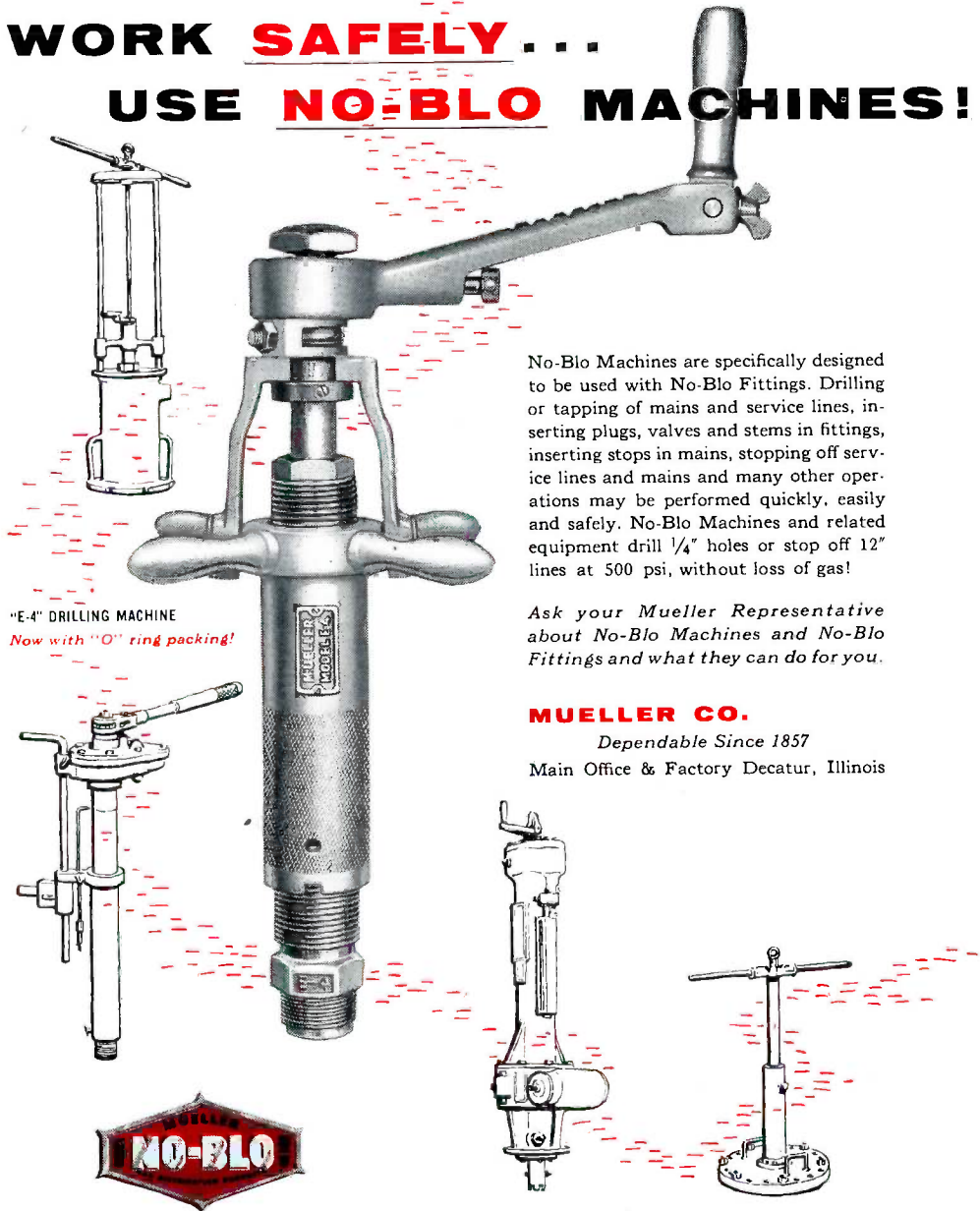
SEPTEMBER • 1954



MUELLER

WORK **SAFELY**...

USE **NO-BLO** MACHINES!



"E-4" DRILLING MACHINE
Now with "O" ring packing!

No-Blo Machines are specifically designed to be used with No-Blo Fittings. Drilling or tapping of mains and service lines, inserting plugs, valves and stems in fittings, inserting stops in mains, stopping off service lines and mains and many other operations may be performed quickly, easily and safely. No-Blo Machines and related equipment drill $\frac{1}{4}$ " holes or stop off 12" lines at 500 psi, without loss of gas!

Ask your Mueller Representative about No-Blo Machines and No-Blo Fittings and what they can do for you.

MUELLER CO.

Dependable Since 1857

Main Office & Factory Decatur, Illinois



THIS MONTH'S COVER

Underground storage—the technique of pressuring gas into depleted sands and holding it in readiness for winter withdrawal—is a vitally important factor in meeting Pittsburgh, Pennsylvania's winter gas needs. Because of the increasing importance of storage, Equitable Gas Company supports a continuing program aimed at the development and expansion of these facilities. Pictured above is a rotary rig at work reconditioning a well in one of Equitable's major storage pools.



September • 1954

WALTER H. DYER, Editor

MUELLER Co.

MANUFACTURERS OF WATER AND GAS
DISTRIBUTION AND SERVICE PRODUCTS

FACTORIES
DECATUR, ILL. LOS ANGELES, CALIF.
SARNIA, ONT. CHATTANOOGA, TENN.

SALES OFFICES
NEW YORK CITY SAN FRANCISCO

TRADE MARK

MUELLER

Reg. U. S. Pat. Off.

Member Industrial Editors Association of Chicago
and International Council of Industrial Editors



*Recording
Our
Thoughts*

Eleven Mueller Co. sales and engineering representatives will be among those present at the thirty-sixth annual convention of the American Gas Association to be held October 11, 12 and 13 at Atlantic City, New Jersey.

Those attending will be Leroy J. Evans, vice president in charge of Eastern Sales; Robert K. Levey, assistant general sales manager; A. D. Parks, Southeast sales manager; Allan D. MacLean, chief products engineer; George W. Knipe, assistant sales manager New York office; and Stanley B. Johnson, James E. Williamson, Edward D. Ayers, Eugene P. Graeber, R. C. Sponsler, and H. T. Hufine, all sales representatives.

Mueller Co. has long taken an active part in the American Gas Association, the Gas Appliance Manufacturers Association, and gas industry groups. Its members who will attend this year's convention are looking forward to meeting new friends and renewing old acquaintances.

* * *

There has been a slight change in the phrasing of the Pledge of Allegiance to the Flag. As amended by Public Law No. 396, which took effect June 14, 1954 (Flag Day), the Pledge is as follows:

"I Pledge Allegiance to the Flag of the United States of America, and to the Republic for Which It Stands, One Nation, under God, Indivisible, with Liberty and Justice for All."

* * *

Although gas industry executives are concentrating on the coming thirty-sixth annual convention of the A.G.A., plans already have been made for the 1955 event and details of that meeting are announced elsewhere in this issue.

The meetings will be held in conjunction with the Pacific Coast Gas Association at Los Angeles.

EQUITABLE GAS CO.

Keeping Pace With The New Steel City

Equitable Gas Company has been serving natural gas to its hometown of Pittsburgh, Pennsylvania, since 1888, but though the company proudly can look back on 66 years of faithful community service it is much more concerned with the future. Equitable is constantly hurrying ahead with growth plans and expansion projects to keep pace with the renaissance of Pittsburgh, "The New Steel City."

An independent, publicly-owned utility whose stock ownership is distributed throughout the 48 states, Equitable is playing a vital part in Pittsburgh's progress, distributing natural gas to some 210,000 residential customers, 20,000

Serving the downtown Pittsburgh area, Equitable's lines parallel many of the more heavily traveled streets. Here, a distribution crew relocates a ten-inch line in the heart of downtown Pittsburgh.



commercial customers and 750 industrial customers. More than 241,000 meters tick off gas sales to a service area that exceeds 1000 square miles in area and 1½ million population. The network of distribution lines that accomplish this task, if laid end to end, would stretch from Pittsburgh to Los Angeles. The gathering lines that collect the gas for distribution would extend from Pittsburgh to Santa Fe, New Mexico. Situated in the heart of an area noted for its heavy industry, Equitable numbers among its customers many of the world's industrial giants.

Through Equitable's lines goes natural gas for:

The world's largest manufacturer of steel rolls

The world's largest manufacturer of rolling mill machinery

The world's largest foods products company of its kind

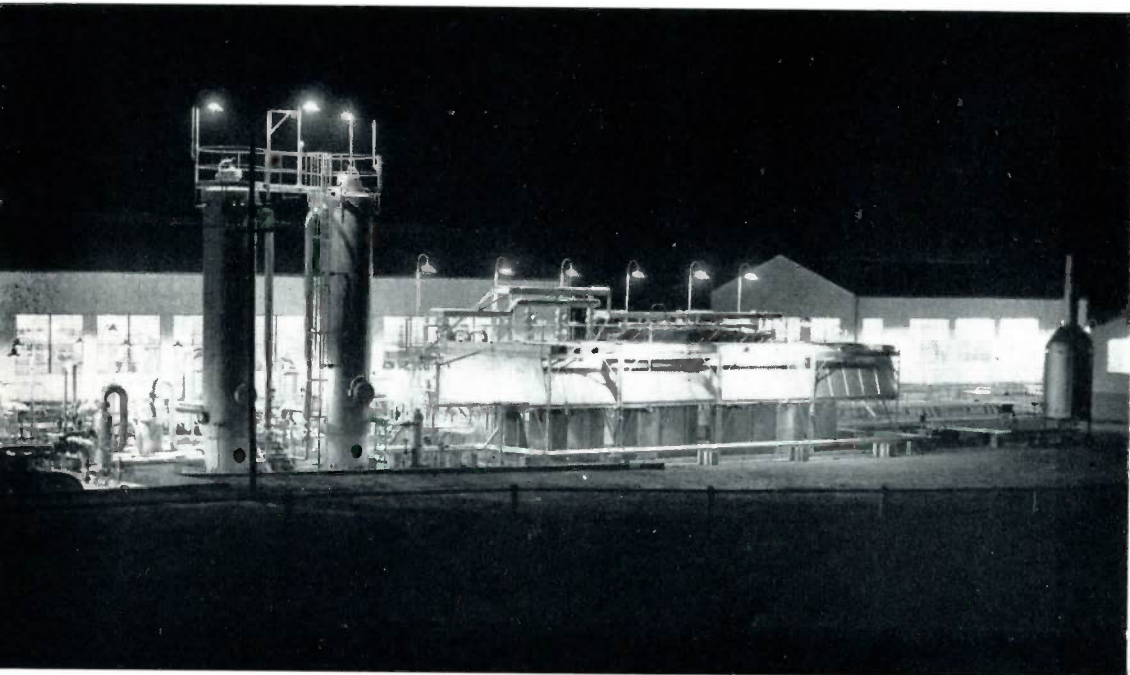
The world's largest manufacturer of air brakes

The world's largest steel manufacturing corporation

The world's largest wire manufacturing plant

The world's second largest electrical equipment manufacturer

M U E L L E R R E C O R D



Equitable's Pratt Compressing Station by night. This 3520 H. P. installation serves the Pratt Storage Pool, one of twelve such underground storage areas operated within the Equitable System. The capacity of the Pratt Pool is approximately 4 billion cubic feet. Equitable is expected to have in storage approximately 27 billion cubic feet of gas at the beginning of the 1954-55 heating season.

The world's largest manufacturer of lifting jacks

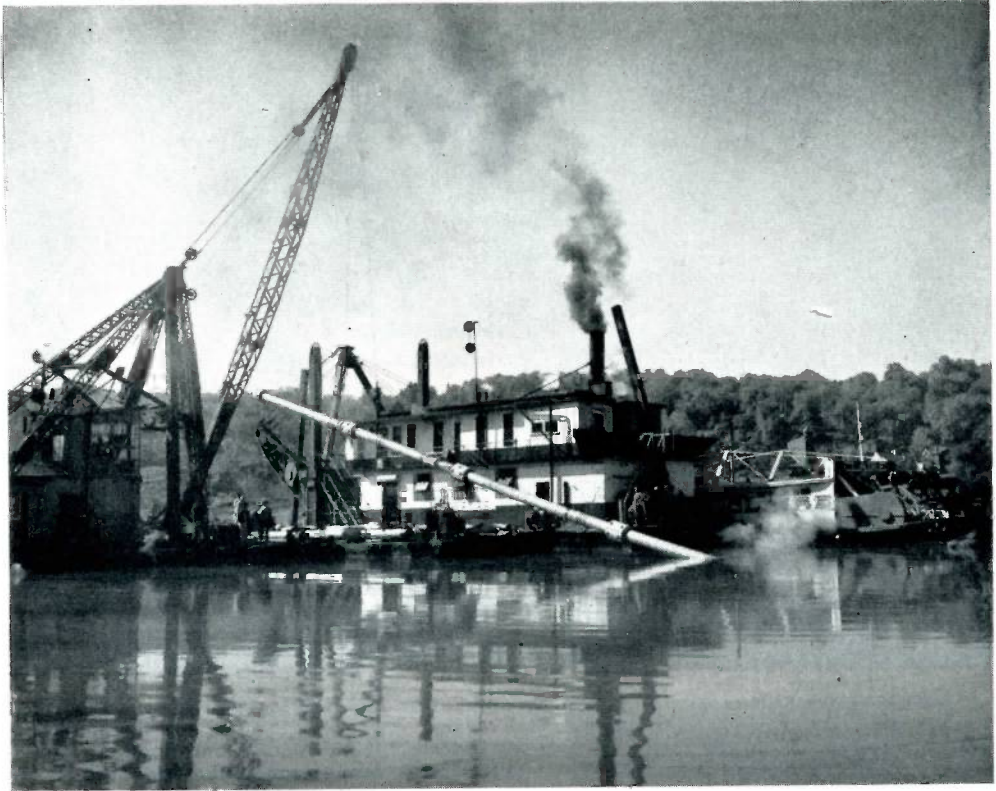
America's largest manufacturer of bolts, nuts and rivets

America's largest wrought iron pipe manufacturer.

These firms are typical of the diversified industries that utilize natural gas for production operations. Nearly 6000 manufactured products are turned out within the Pittsburgh district, and in the manufacture of many, gas drawn from Equitable's service lines plays an important part. Natural gas is used for forming, forging, heat treating, baking, melting, tempering—in short, for practically every major industrial process requiring heat. Participating in Pittsburgh's renaissance, the modern rebuilding program that has earned Pittsburgh the title of "the most progressive city in the nation," Equitable supplies gas to many new plants recently attracted to the area. The new "Gateway Center," a cluster of downtown skyscrapers christened "Pittsburgh's Rockefeller Center," is also served by Equitable. And on the

far outskirts of town Equitable's lines pass under the "No Admittance" sign to evaporate heavy water in the area's first atomic research center. For such widely diversified applications Equitable is supplying Pittsburgh's industry with the efficient, economical, dependable fuel—natural gas.

Supplying natural gas for Pittsburgh's industry is a very important task, but equally important is the maintenance of an uninterrupted flow of gas for Pittsburgh's homes. The use of gas for house-heating has rocketed sharply upward during the post-war period, with nearly 60 per cent of all Western Pennsylvania families now using this heat source. Because of the rapid expansion of this load, underground storage has emerged as a vitally important element in assuring adequate gas service for Equitable's Pittsburgh customers. A group of 11 storage pools with a combined capacity in excess of 26 million cubic feet are primed to deliver their reserves when needed. Augmenting this reserve is Equitable's new Logansport Pool, now



Surmounting a natural river barrier, an Equitable Gas pipeline is submerged beneath the Monongahela River. This job required the installation of 1350' of 16" line. Difficult terrain features and natural water barriers are common throughout the 1000 square mile area served by Equitable.

being developed in Marion and Wetzel Counties, West Virginia. With an estimated ultimate capacity of approximately 3 billion cubic feet, the Logansport Pool constitutes a major addition to Equitable's extensive storage system.

The technique of underground storage, so essential to the winter gas supply of many communities, lists among its pioneers the name of the late D. P. Hartson, former vice-president and general manager of Equitable. In the 1930's Mr. Hartson initiated a study to determine the feasibility of underground storage for Equitable. As a result of that research, in 1934 Equitable pressured 33 million cubic feet of gas into its first storage pool, among the first in the Appalachian area. From that early experiment came the know-how that makes possible the company's current widespread underground storage operations. In recognition of Mr. Hartson's contribu-

tions in the field of storage operations and as tribute to his leadership, one of Equitable's newest and most powerful compressing stations bears his name. At the beginning of the 1953-54 heating season, the volume of gas stored in the company's 11 pools exceeded 26 billion cubic feet. To further develop and expand its storage facilities, Equitable will spend in 1954 approximately \$2 million.

In addition to its Pennsylvania supply sources, Equitable taps company owned producing properties in the states of West Virginia and Kentucky. The West Virginia Division of the Equitable Gas System is responsible for properties in West Virginia, and in Kentucky, the Kentucky West Virginia Gas Company, an Equitable subsidiary, administers properties in that state. Augmenting this Appalachian supply, Equitable purchases gas from several southwest suppliers. Though southwest gas is assuming an

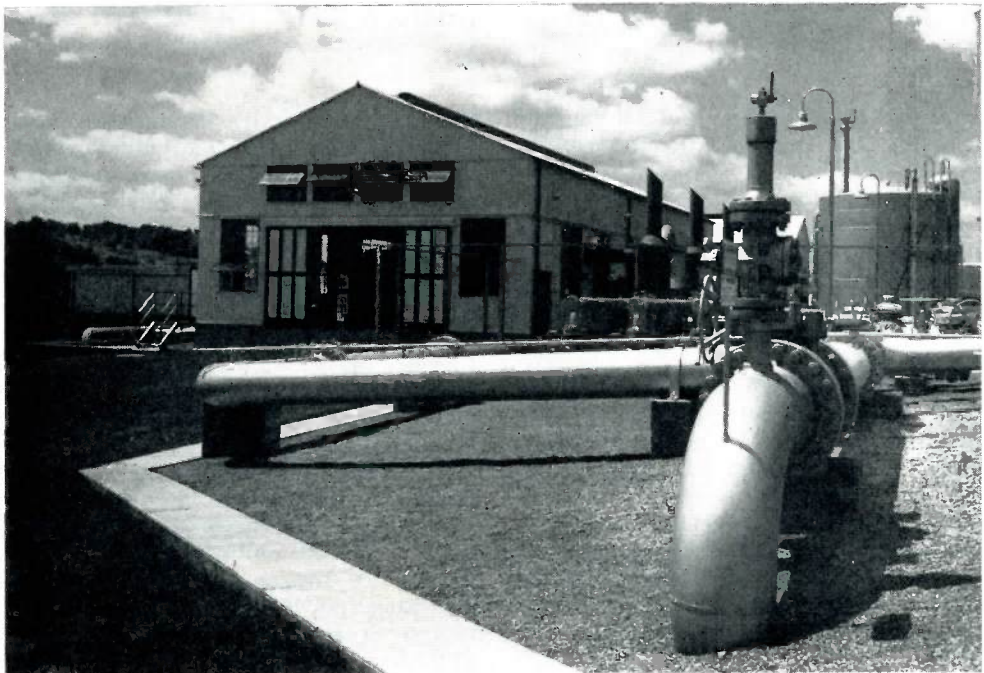
increasing important role in Equitable's supply picture, system production continues to be the more important of the two sources. Of the more than 62 billion cubic feet sold during 1953, Equitable's system production accounted for over 50 per cent of this volume.

Operational statistics alone don't tell the full story of the Equitable Gas Company. Friendly, efficient service to its customers and to the Pittsburgh community is its chief stock-in-trade, and the company is continually improving its facilities toward this end. At any one of seven modern district offices located throughout Equitable's Greater Pittsburgh service area, customers may pay bills, purchase gas appliances, and obtain answers to any questions relating to their natural gas service. These offices have recently been modernized to facilitate convenient, efficient handling of customer service matters. Here also, customers may inspect and purchase top quality gas appliances, selected for their reliability and high performance standards. These district office facilities rep-

resent one phase of a complete customer service program that includes a new customer service center which, to the company's knowledge, is unexcelled for accurate, expeditious handling of customer requests. Located in the company's main offices at 420 Boulevard of the Allies, in downtown Pittsburgh, inquiries directed to this center can be handled in as little as two minutes through a system created especially for Equitable by Remington-Rand, Inc. A unique filing arrangement and work routing system reduce delay in processing requests to a minimum. Direct two-way radio communications with service crews in the field permit the prompt dispatching of a crew approximately one minute after the customer has completed the phone call requesting service. Now in full operation this center enables service personnel to keep abreast of calls for service, even during rush periods when stringent demands are placed upon the system.

A friendly program for customers, in order to be complete, must consider the end use of the product as well as the

D. P. Hartson Compressing Station—named for the late vice-president and general manager of Equitable who contributed so much to an understanding and appreciation of the vast possibilities of underground storage. The experience and know-how supporting Equitable's current widespread storage operations are principally due to Mr. Hartson's pioneer work in the field.





Under difficult working conditions, Equitable distribution crewmen cap the open end of a 16" line which is being cut off. This particular line, strung along the underside of one of Pittsburgh's 148 bridges, was dismantled to facilitate construction of Pittsburgh's new Penn-Lincoln Parkway, a 27 mile expressway that will speed east-west traffic uninterruptedly across the heart of the city.

problems involved in its distribution. Believing that a well rounded service policy is essential for the good customer relations, Equitable has broadened its home service activities to keep in step with customer growth and needs. "Friendship Cottage," Equitable's home service center located in downtown Pittsburgh, has been restyled and modernized to present home service personnel in modern, attractive surroundings. Home Service activities carry a substantial impact from public relations standpoint, and if judged solely on the basis of number of customers contacted, their influence is appreciable. Realizing the importance of putting your best foot forward, Equitable has staffed its Home Service Division with a group of graduate home economists, competent in all phases of home economics. This staff

provides Pittsburgh's homemakers with a ready source of information and assistance on all homemaking problems. Food selection and preparation, meal planning, laundry techniques, cooking schools, dessert bridge parties—these and similar services, including the use of the Home Service auditorium for group meetings—are available for the asking.

Under A. W. Conover, its president, Equitable is currently engaged in a continuing expansion program to give the Pittsburgh community the very finest natural gas service possible. In 1954 alone, more than \$8 million will be spent to improve and expand the system. Including the \$8 million earmarked for 1954, since the end of World War II Equitable has invested more than \$58 million to keep pace with Pittsburgh's progress.

Not Only Cooks Your Food . . .

Natural Gas Grows It Too

Natural gas not only is cooking your food, it's growing it too.

That's the latest from the fabulous field of petrochemicals developed during the past eight years. This new boon to farmers—and housewives, too—is called anhydrous ammonia and it does such things as double the yield of cotton from a single acre, produce bonus bushels of corn and make grass greener, heavier and longer.

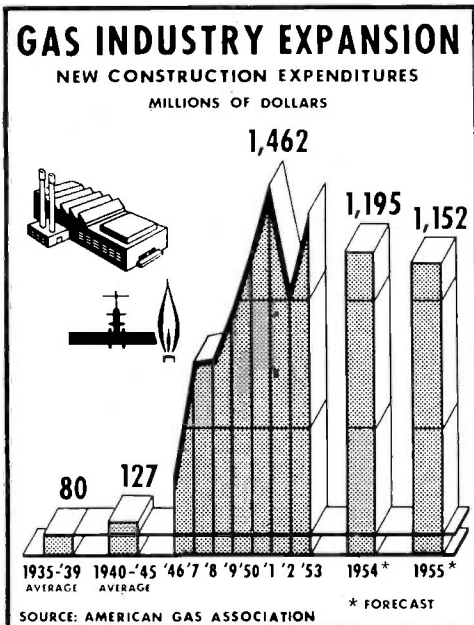
In fact, practically all food crops benefit from treatment with this new chemical. It is a blend of natural gas, steam and air, and it is either mixed with irrigation water or plowed into soil with special equipment.

The Gas Appliance Manufacturers Association reports that many rural and suburban distributors of liquefied petroleum gas—also known locally as bottled gas, butane or propane—are supplying

anhydrous ammonia to the same customers who use the natural fuel for cooking, house heating, water heating, clothes drying, refrigeration, incineration and other domestic purposes as well as for operating chicken brooders and fueling such farm equipment as tractors.

One of the most important factors in the more universal adoption of this "waterless" ammonia is its ability to re-establish the growing qualities of a tract of land, according to GAMA. Normally, acreage cannot be replanted with the same crop in successive years because that particular crop will extract so much nitrogen from the soil that a second crop would be unprofitable. Usually, therefore, the farmer would have to rotate crops in order to install new life in the soil. But, with the use of "AA", it is possible to plant and harvest bigger and more profitable crops year after year, because AA's weight consists of four-fifths nitrogen.

This year, according to a recent report, some 9,000,000 acres in 40 states will be fertilized with 30,000 tons of the chemical and housewives will benefit by heartier, cheaper vegetables and grain products while farmers will increase their pay crops by as much as 100 per cent.



SINCE World War II expansion of the gas industry has averaged nearly one billion dollars per year, or 10 times the rate of prewar development. As a result of this expansion, an average of 900,000 new customers per year have been added to utility gas lines which now serve more than 27 million users in the United States.

ENCOURAGE EMPLOYMENT

Although social security is both desirable and necessary, it is no substitute for productive employment, says the Chamber of Commerce of the United States. Therefore, every effort should be made by business and other groups to encourage high levels of production and steady employment.

Too many people believe a great deal more than they hear.

"Hey, did you see her bathing suit?"
"Almost."



C. L. Morgan

E. M. Cannon

L. G. Malloch

W. O. Allen

W. W. Clopton

At United Gas Corporation

4 Promotions, Retirement Announced

Announcement of the retirement of W. W. Clopton, San Antonio, Texas, district manager of United Pipe Line Company, on August 1, and appointment of W. O. Allen to succeed him in that position, has been made by N. C. McGowen of Shreveport, Louisiana, president of United Gas Corporation.

Also announced by Mr. McGowen were three personnel advancements, involving two Texas men and one from Mississippi, to new positions in the Texas distribution of United Gas Corporation.

C. L. Morgan, formerly Houston division manager, has been named to the position of operating superintendent for the Texas distribution division.

E. M. Cannon, East Texas division manager at Jacksonville, has been promoted to Houston division manager.

Leroy G. Malloch, McComb district manager of the Mississippi distribution division, has been promoted to the position of East Texas division manager at Jacksonville to succeed Mr. Cannon.

In his new position, Mr. Morgan will supervise distribution operations in four United Gas distribution divisions which serve 157 Texas cities and towns.

Mr. Clopton, who passed his 30th year of continuous service with United Gas and predecessor companies in June,

is one of the veterans of the natural gas industry in the Southwest. He has taken a leading part in all phases of gas and oil industry activity in Texas, and has been an active member of the Texas Mid-Continent Oil & Gas Association, Southern Gas Association, Independent Petroleum Association of America and other industry organizations.

He began his long career with a predecessor company at Kirbyville in 1924 during construction of the original Sereta, Louisiana, to Beaumont, Texas, pipe line. Later he became a section foreman of the pipe line department at Latex, and in 1936 was promoted and transferred to Wichita Falls as section foreman. He became district pipe line superintendent there in 1940, and was later promoted to district manager.

Mr. Allen, who succeeds Mr. Clopton as district manager, has lived in San Antonio since February of this year when he was named assistant manager of the San Antonio district. Before this promotion, he was construction superintendent in the Shreveport general office engineering department. He completed 31 years of service with United Gas and predecessor companies in May.

No. 4 Again Obtains Perfect Shutoffs

Mueller No. 4 line stopper equipment, recently perfected for use on ten and twelve-inch steel lines, was used during July and August by the Piedmont Natural Gas Company in Charlotte, North Carolina, Panhandle Eastern Pipe Line Company near Tuscola, Illinois, and Rochester Gas and Electric Company in Rochester, New York.

Piedmont Natural Gas Company isolated a section of their ten-inch main transmission line leading into the city of Charlotte with the new equipment on July 26 and 27. This was necessary to enable Piedmont to lower the line several feet in order that a highway construction job might be completed without interruption of gas service to the city of Charlotte.

Mueller No. 4 equipment was called into action and enabled perfect shut-off to be obtained. Two line stopper fittings and two C-1 machines were used for the job. A four-inch by-pass was constructed to carry the load while the main line was lowered to make room for the highway.

Panhandle Eastern Pipe Line Company again called on our No. 4 line stopper equipment for use near Tuscola. Alterations on Panhandle's ten-inch line serving Villa Grove, Champaign, and Urbana, Illinois, were needed because a pressure increase was soon to be made. Prior to the pressure increase, it was necessary to make regulator station and valve changes.

One ten-inch fitting and a block gate was employed to isolate the section undergoing the change. A line pack of 400 pounds rather than a by-pass line was used while alterations were made.

Rochester Gas and Electric Company required the use of one twelve-inch line stopper fitting in order to make a tie-in of a new twenty-inch loop line to their existing twelve-inch line. Mueller No. 4 line stopper equipment was taken to the scene at Rochester. A gate valve was used on one end of the isolated section for a shut-off and the 12" line stopper fitting on the other. A four-inch by-pass line from the stopping machine to a four-

inch H-17495 Save-A-Valve Nipple continued service around the isolated section during the tie-in.

Mueller engineer John J. Smith was present to supervise use of the equipment at all three jobs. The Tuscola operation took place on August 7 and 8, and the equipment was used at Rochester on August 23 and 24.

Jack Chepan, also a Mueller Co. engineer, was present to assist in the work at Rochester.

A. D. Parks, Southeast sales manager, and Lorin Grosboll, sales representative, were present to observe use of the equipment at Charlotte, and Ed Fenstad and Ed Ayers, sales representatives, were on hand for the Rochester job.



A Mueller C-1 air power operated drilling machine is making cut in ten-inch Mueller line stopper fitting. In background at right are A. D. Parks, Southeast sales manager, and Lorin Grosboll, sales representative for Mueller Co. Other three men are Piedmont Natural Gas Company employees.



At left is a general view of the operation near Charlotte, North Carolina. One fitting is in the foreground where a C-1 drilling machine is in use. The truck in the rear is the location of the second fitting. Rock had to be blasted to lower gas main. The photo at right is a close up of the drilling operation as shown in the general view.

The stopper is set in the fitting and is being expanded in the photo at left. Note the section of pipe removed from the line to accommodate the stopper retained in the shell. At right you see the cutting of the line to permit installation of the plug valve at Charlotte. This permits the removal of the line stopper equipment.





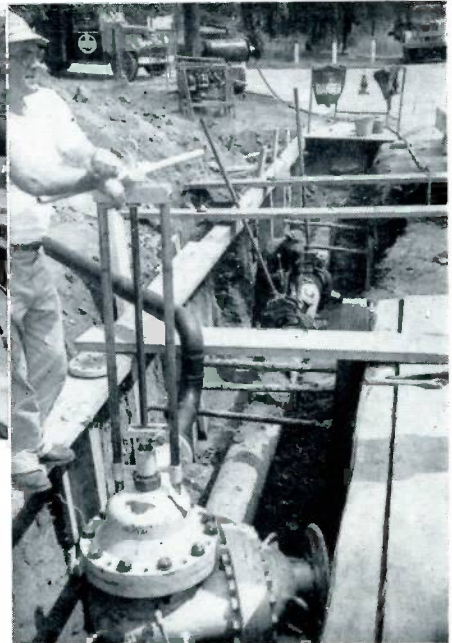
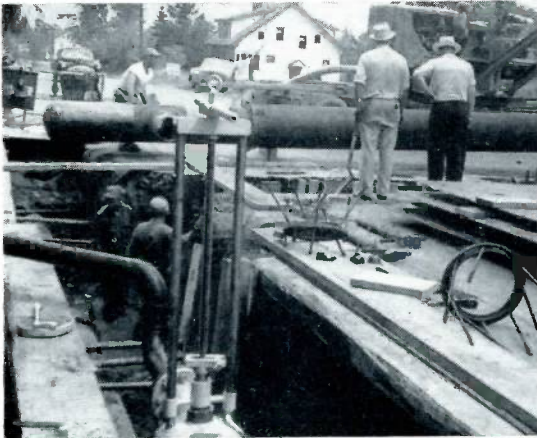
At Tuscola, Illinois, Panhandle Eastern Pipe Line Company workmen use a Mueller C-1 drilling machine in the photo at left to make a cut in the Mueller ten-inch line stopper fitting. At right, workmen are attaching the steel wedge stopping machine to the gate valve.

Below left, you see the lowering and expanding of the stopper. This is done in order to shut off the line. At right, a Panhandle employee welds a new two-inch lateral valve in place on a ten-inch line. The old valves and piping can be seen on the bank in the rear. Higher pressures will be possible with the installation of the new valve.





Panhandle workmen use a Mueller D-4 drilling machine in order to drill this two-inch line stopper fitting.



Rochester Gas and Electric Company employees have Mueller line stopper equipment in place, the by-pass line in operation, the twelve-inch line cut and the new twenty-inch section is being lowered into place. At right, Mueller Engineer Jack Chepan has the steel wedge stopping machine in place and the two mechanical cutters on the line ready to remove the section.

36th A.G.A. Convention Set

Annual Event To Be

Held in Atlantic City

Subjects ranging from landing gas loads to latest legislation will be featured at the thirty-sixth annual convention of the American Gas Association at Atlantic City, New Jersey, October 11, 12 and 13. Everett J. Boothby, chairman, A. G. A. General Convention Committee, and president, Washington Gas Light Company, reports that an impressive list of speakers has been assembled for the three-day meeting.

A special feature of this year's convention will be a "Team Up!—Land the Load!" meeting in the auditorium ballroom, at 2 p.m. on Wednesday, October 13. To facilitate attendance at this pep meeting, luncheon and refreshments will be served in the auditorium immediately after the general session on Wednesday morning.

The inspirational "Land the Load" meeting will be off to a fast start with L. L. Baxter, president, Arkansas Western Gas Company, presiding. W. M. Jacobs, vice-president, Southern California Gas Company, will review the status of the Gas Industry Development Plan, as applied in principle at Pasadena, one of the ten action demonstration cities.

E. Carl Sorby, vice-president, Geo. D. Roper Corporation, will illustrate the sales possibilities inherent in new range developments under the PAR Plan and from the laboratories of manufacturers.

During his term as A.G.A. president, E. H. Eacker, president, Boston Consolidated Gas Company, has gained first hand knowledge of the industry's prob-

lems by extensive travels across the United States and Canada. His diagnosis of industry ills and his prescription for their cure will be worth hearing.

Two elections will be held during the convention. Officers of the Association will be elected at the general session on Monday. Directors will be elected at the executive session the same day. Norman B. Bertollette, president, Hartford Gas Company, will present the report of the General Nominating Committee.

Mr. Bertollette, chairman of the Laboratories Managing Committee, will sponsor an historic event in Association records on Tuesday. A new wing at the Cleveland branch of the A. G. A. Laboratories is to be dedicated to Raymond M. Conner, the first director of the Laboratories, in honor of his long and faithful service to the industry. A bronze plaque, commemorating the dedication will be presented to Mr. Conner.

Other awards for outstanding accomplishments by gas industry members during the past year will be made by President Eacker at Tuesday's General Session. These honors include the A.G.A. Distinguished Service Award, the A.G.A. Meritorious Service Award, the A.G.A. Distribution Achievement Award, the Beal Medal, the A.G.A. Home Service Achievement Awards, and Safety Achievement Awards.

President Eacker will officially open the convention in the auditorium ballroom at 10 a.m. Monday. The treasurer's report will be given by Vincent T. Miles, treasurer, Long Island Lighting Company, and A.G.A. treasurer.

The President's address, delivered by Mr. Eacker, will present delegates with a pertinent review of industry conditions and Association plans. The next order

of business will be election of Association officers. This will be followed by an inspirational address by Dr. Kenneth McFarland, educational consultant and lecturer for General Motors Company.

Sheldon Coleman, president, Gas Appliance Manufacturers Association, and president, The Coleman Company, Inc., will open the General Session on Tuesday, with illustrated slides, he will show where the industry has been, where it is today and where it may go, in a talk "Who's On the Defensive?"

The Gas Industry Development Program has been the gas industry's action program in 1954. J. Theodore Wolfe, executive vice-president, Consolidated Gas Electric Light and Power Company, will bring delegates up-to-date on all facets of the program in his talk: "The Gas Industry In Action."

The Phillips Petroleum Company has been the guinea pig used to test the regulatory power of the Federal Power Commission. Effects of the last Supreme Court decision on his company and on other producers will be discussed by K. S. Adams, chairman of the board of Phillips Petroleum, at the Tuesday session.

Other phases of the natural gas industry will be reviewed at the Wednesday meeting by the newly elected president of the Independent Natural Gas Association. He will discuss problems of transmission companies.

From outside the industry, the Convention Committee secured a noted speaker in John J. McCloy, now chairman of the board, Chase National Bank. He has served as Assistant Secretary of War, and U. S. High Commissioner for Germany. He will talk on the dynamic aspects that shape our economic life, and their impact on American business and industry. D. A. Hulcy, president, Lone Star Gas Company, and past president, U. S. Chamber of Commerce, and past president, A.G.A., will close the session with a pertinent summary of events of the Convention.

Louis R. Quad, Public Service Electric & Gas Company, reveals that the Convention Entertainment Committee which he heads, is signing up outstanding talent. The program will include the President's Reception with entertainment and

dancing, Monday in the auditorium ballroom at 9 p.m.; the Ladies Party on Tuesday at 2 p.m. in the Solarium, Marlborough Blenheim Hotel, and on Tuesday evening a program of musical and vaudeville numbers at 9 p.m. in the auditorium ballroom.

Sectional activities will take place on Monday and Tuesday afternoons.

The Operating Section meetings will be held at the Claridge Hotel with F. J. Pfluke, Rochester Gas & Electric Corporation, presiding as chairman of the Section. At the Monday afternoon session he will read the Section report. C. W. Wilson, Consolidated Gas Electric Light & Power Company of Baltimore, will submit the Nominating Committee's slate of candidates. Section officers will be elected and introduced. John E. Overbeck, Columbia Gas System Service Company, will read the report of the Committee on Gas Measurement and A. L. Vaughn, Northern Natural Gas Company, will deliver a paper on natural gas conditioning processes.

E. W. Kenefake, General Electric Company, will present one of the most interesting features of the Section's meeting, devoted to remote controlled operation of pipelines. Closed circuits, color television demonstrations and instrumentation will be featured. A panel session on Customer Service, headed by W. W. Gilliss, will be guided by Calvin Brown, Rochester Gas & Electric Corporation; J. H. Dennis, Long Island Lighting Company; J. G. White, The Peoples Gas Light & Coke Company; C. S. Hazel, Philadelphia Gas Works, and W. M. Hawkins, Laclede Gas Company.

On Tuesday afternoon the Operating Section's Award of Merit will be given to section members designated for this honor. F. A. Hough, Southern Counties Gas Company, chairman ASA Subcommittee 8, will report on the work done on the Code for Pressure Piping for gas transmission and distribution piping safety.

John R. Gardner, Central Hudson Gas & Electric Company, will report for the subcommittee on Customer Load Characteristics, and a report on offshore drilling and production of natural gas will be given. H. L. Hamilton, of A. V. Smith Engineering Company will talk

on insulating joints as a safety measure and D. L. White, Washington Gas Light Company, will head a panel on Quality Control.

The Chalfonte-Haddon Hall is the location for Accounting Section meetings under supervision of Paul Ewers, Michigan Consolidated Gas Company, who is section chairman. The Monday afternoon session will have L. R. Quad as chairman, and Arthur Skelton, The Peoples Gas Light & Coke Company, will preside Tuesday afternoon.

Three recipients will receive the Section's Order of Accounting Merit on Monday from E. H. Eacker, president of A.G.A. Speakers at the Monday session will include W. D. Sweetman, The Peoples Gas Light & Coke Company, who will discuss ways of combating operating expenses.

Earl G. Planty, Johnson & Johnson Company, will talk on training personnel to produce more enlightened management. Charles E. Reno, formerly Republic Steel Corporation, will deliver some entertaining views on "The High Cost of Economic Ignorance."

Mr. Ewers will present the major accomplishments of the Accounting Section in his chairman's report at a luncheon meeting on Tuesday. Included will be plans for researching electronics equipment, work done with the NARUC and the customer relations training film and manual.

Charles Mann, Columbia Gas System Service Corporation will talk on taxes and a paper will be given on training personnel to use electronic machines. A talk on communication and exchange of information will be given by Wesley Wiksell, Louisiana State University. The slate of officers submitted by B. S. Rodey, Consolidated Edison Company of New York will be presented to the Section members before the close of the session. Section officers for the coming year will be elected.

The Residential Gas Section will sponsor only one meeting. It will be a full-dress promotional meeting staged in the Auditorium Ballroom on Monday afternoon, with Walter H. Kurdelski, Michigan Consolidated Gas Company, as chairman. R. J. Vandagriff, Laclede Gas Company, will submit the report of the

Nominating Committee and officers for the section will be elected.

Mr. Kurdelski will review the sales and promotional programs of A.G.A. designed to help solve industry merchandising problems. Frank C. Smith, past president of A.G.A., and president, Houston Natural Gas Corporation, will deliver an address: "This Is It!" As one of the industry's most articulate and eloquent speakers, his ideas on what our industry can do to increase sales will be most pertinent.

An added feature at the session will be a showing of "A Word to the Wives," a color movie produced by the Woman's Home Companion, in association with A.G.A. and the National Association of Home Builders. It features such stars as Marsha Hunt and Darren McGavin. Additional kitchen and laundry ideas will be given by R. G. Chapman, Mutchler Bros. "Selling Tomorrow's Homemakers Today," by Frank H. Trembly, vice president, Philadelphia Gas Works, is an excellent summary of educational work being done by A.G.A.

A dramatization of the advantages of using the laundry as a vehicle for selling gas water heaters and dryers will be staged by C. E. Bartlett and Frank A. McFerran, Ruud Manufacturing Company, and W. W. Selzer, Columbia Gas System Service Corporation.

The Home Service Breakfast will be held at the Hotel Traymore at 8:00 a. m. with Mary E. Huck, The Ohio Fuel Gas Company, presiding. The theme this year will be "South Shore Melodies." President E. H. Eacker will greet the delegates attending and Dr. Dorothy Lyle, National Institute of Cleaning and Dyeing, will talk on the new miracle fabrics.

The Round Table for Home Service will be staged at the Hotel Dennis on Tuesday afternoon, with chairman, Mary E. Huck again presiding. Katherine L. Rathbone, Southern Counties Gas Company, will talk on Summer Training for College Students and Staff and Mrs. Martha S. Tupper, Dudley, Anderson & Yutzky, public relations agency, New York, will speak on Creating an Idea. Mrs. Eleanor V. Wiese, Public Service Electric & Gas Company, will offer ideas for Old Stove Round Up promotions in her "Queen of the Range"

presentation. Flora G. Dowler The Manufacturers Light & Heat Company, will describe a Community Promotion of Incineration that was successful in Pittsburgh. Mildred R. Clark, Oklahoma Natural Gas Company, will discuss Home Service Cooperation with Builders, a new development in this field.

Charles C. Eeles, The Ohio Fuel Gas Company, as section chairman, will preside at the luncheon meeting of the Industrial and Commercial Gas Section at the Hotel Traymore on Tuesday at 12:30 p. m. F. Marion Banks, president, Southern California Gas Company, and president-elect of A.G.A., will deliver the luncheon address.

The benefits derived from attracting new industries, not only in industrial but residential and commercial loads, will be presented by Clayton S. Conkright, Public Service Electric & Gas Company. From experience gained in the heart of the highly competitive TVA area, Edwin S. Mack, Chattanooga Gas Company, will tell delegates the best way to meet competition is to BE competition. Mr. Eeles will review the action programs of the Section in the past year. E. Terry Hart, Nashville Gas Company, will submit the report of the Nominating Committee and officers will be elected for the coming year.

Howard B. Noyes, senior vice-president, Washington Gas Light Company, and chairman, General Management Section, announces that the Arrangements Committee, under William B. Tippy, Commonwealth Services, Incorporated, has obtained S. Whitney Landon, secretary and assistant to the president, American Telephone and Telegraph Company, as principle speaker at a luncheon meeting in the Chalfonte Hotel Tuesday noon. With a background of more than twenty years in legal and corporate secretarial work with A. T. & T., Mr. Landon is well fitted to talk on "Our Friend, The Stockholder," from the public utility point of view. Officers will be elected and a new nominating committee appointed for the Section at the Tuesday meeting. Mr. Noyes reports that the newest section in A.G.A. has grown from 200 members to 1350 in the past year and a half. It is anticipated that organizational meetings of the Committees of the Section, to be

held at Atlantic City, will contribute greatly to the success of the Spring Conference to be held in 1955 for the General Management Section.

All signs point to a big attendance at the 36th Annual Convention. Advance registrations are heavy, and while adequate accommodations will be available, first choice of hotels now may not be possible for all delegates. Reservation requests should be sent to the A.G.A. Housing Bureau, 16 Central Pier, Atlantic City, New Jersey, listing three hotels of choice.

Registration fee is \$15.00 per person, with no charge for ladies who are not company member employees. Luncheon and Home Service Breakfast tickets can be purchased in advance. Early registration of delegates is urged to facilitate reaching any member if need arises. Registration can be made on Sunday afternoon and during other days at the Auditorium and at the Traymore and Haddon Hall Hotels.

GAS HEAT ON RISE

A survey by the Gas Appliance Manufacturers Association indicates that 706,000 new homes will be equipped with gas heating systems this coming winter, 644,000 next winter and 613,000 more during the following heating season. In addition, GAMA reports, 606,000 existing homes will be converted to gas heat this winter, 639,000 during the next and 638,000 in the following period.

FREEDOM TO CHOOSE

A grocery carries at least 3,000 different items. A drug or hardware store stocks more than 10,000 items, while the inventory of a large department store will include 500,000 items. According to the Chamber of Commerce of the United States, the reason for so many varieties and types of products is that no two families in America live exactly the same way or wish to buy exactly the same list of goods. Here is an important American freedom made possible by the nation's distribution system—freedom to choose what we buy.

Women love the simple things of life—men.

Introducing:

**J. H. McClintick,
Sales Assistant,
Gas Department**

James H. McClintick, a promising young member of our Sales Division, is observing his first anniversary with Mueller Co. in October.

Mr. McClintick, who is 25, has shown considerable ability in the field of administrative sales work. He joined the firm ten months ago as second assistant to Francis E. Carroll, assistant sales manager, gas department.

His leadership abilities were proven during the more than three years he spent in the United States Army. Mr. McClintick was called into service as a private in 1950, and quickly advanced to the rank of sergeant first class. After one and one-half years service, he was chosen to attend officers' candidate school of the Armored Division.

Graduated as a second lieutenant, he later was promoted to first lieutenant and was given the opportunity to make his career that of an army officer. Instead, when the time came for his release, he chose civilian life and a job with Mueller Co. "The army was fine," he said, "but it's no life for a man with a family, especially if you want to settle down in one spot." Mr. and Mrs. McClintick are the parents of three children, a son, and two daughters. He was discharged from the service in September, 1953.

Born in Chicago, Mr. McClintick moved with his family to Decatur when he was a small boy. He graduated from Decatur High School and studied industrial engineering at Millikin University in Decatur for two and one-half years. Shortly before he was called into service, he left the university and accepted a position as draftsman and tool designer at a Decatur firm.

His duties at Mueller Co. include the handling of correspondence with our customers. He often is called upon to recommend Mueller Co. products best suited for the requirements of our



JAMES H. McCLINTICK

customers, and to provide technical assistance to our customers and sales representatives. Included in the material handled by this department are gas stops, drilling and tapping machines, gas transmission and distribution equipment including line stopper equipment and our No-Blo line of service material. Also included are pressure reducing and regulating valves and pressure relief valves for gas, water, air and oil.

Mr. McClintick's hobbies are hunting and fishing. He spends much of his free time on Lake Decatur where, he says, the fish bite the year around.

RECORD BUILDING YEAR

New construction in the nation will reach a record high of \$36,000,000,000 during 1954—two per cent over last year's record \$35,300,000,000—federal studies indicate. Most of the increase will be accounted for by home construction, expected to reach 1,080,000 units instead of the less-than-a-million forecast at the start of the year.

Egotism is the anesthetic which nature gives us to deaden the pain of being a fool.

A. G. A. and P. C. G. A. Will Hold Joint Convention at Los Angeles in 1955

The 37th Annual Convention of the American Gas Association will be held October 17, 18, and 19, 1955, in Los Angeles, California. The meetings will be held in conjunction with the Pacific Coast Gas Association, which has decided to forego its own separate convention in 1955. This combined event will be officially designated as the "1955 Convention of the American Gas Association and the Pacific Coast Gas Association". The P.C.G.A. will hold its constitutional annual meeting during the Convention.

The initial meeting of the 1955 General Convention Committee was held in Los Angeles on August 11 under the Chairmanship of Robert R. Blackburn, vice-president and secretary of the Southern California Gas Company. He announced one hundred per cent attendance at the first committee meeting and said the Convention promises to be most successful.

Attending the first meeting were: N. Henry Gellert, president, Seattle Gas Co.; Clifford Johnstone, managing director, P.C.G.A., San Francisco; James S. Moulton, vice president and executive engineer, Pacific Gas & Electric Company, San Francisco; Roy T. Richards, general superintendent, Arizona Public Service Company, Phoenix; Emery D. Sherwin, president, San Diego Gas & Electric Company, San Diego; Frank B. Wright, vice president, Southern Counties Gas Company of California, Los Angeles; J. Edmund Kern, assistant manager, P.C.G.A., Los Angeles; and Kurwin R. Boyes, secretary, A.G.A., New York. Boyes will serve as convention manager, and Kern, who is thoroughly acquainted with Los Angeles and its convention facilities, has been named associate convention manager.

The General Convention Committee is responsible for transportation, housing, schedule and location of events, budgets, costs, registration, fees, social events, and other important phases of the Convention planning.

At the meeting, Blackburn announced that the Convention Committee would be assisted in obtaining outstanding speakers through a Special Program Committee headed by Robert A. Hornby, executive vice president of Pacific Lighting Corporation. The Committee consists of Eskil I. Bjork, president, The Peoples Gas Light & Coke Company, Chicago; D. A. Hulcy, president, Lone Star Gas Company, Dallas; and J. French Robinson, president, Consolidated Natural Gas Co, New York.

Four other important committee appointments were also announced by Chairman Blackburn. Frank N. Seitz, general sales manager of Southern Counties Gas Company of California, was named to head a local committee to plan and conduct social events for the Convention. Frank M. Foster, general sales manager for Southern California Gas Company, was appointed chairman of a Properties Committee; and Carl A. Renz, manager of special services for the same company, was named chairman of the Local Transportation Committee. George S. Coates, manager of the Customers Department of Southern Counties Gas Company of California, will be the local representative handling registration.

At the initial meeting, the Committee also decided to solicit member companies in the near future to determine how many delegates will be sent to the 1955 Convention.

The next meeting of the General Convention Committee is scheduled for Tuesday, December 7, in San Francisco.

Around the Gas Industry

368-MILE SYSTEM PLANNED

South Georgia Natural Gas Company, of Birmingham, Alabama, has been granted final authorization to construct and operate a 368-mile natural gas transmission system to serve new market areas in Georgia and Florida. The decision, filed by Presiding Examiner Emery J. Woodall, was issued and served August 2 and became final September 2 in conformity with Federal Power Commission rules.

The new line will originate at a point of connection with the system of Southern Natural Gas Company in Lee County, Alabama, and will extend southeasterly to the Albany, Georgia, area. From there, a branch line will extend to Ellaville, Florida, via Valdesta, Georgia, and a second subsidiary line will run from Moultrie, Georgia, to a terminus near the Georgia-Florida border. Estimated cost of the project is \$8,969,429.

The new system will be used to supply natural gas to 15 communities in Georgia and Florida. South Georgia Natural Gas Company also will make interruptible sales to five industrial customers in Georgia and Florida.

* * *

STUDY MOTOR ACCIDENTS

The Accident Prevention Committee, General Management Section of the American Gas Association, has worked out a program with the National Safety Council designed to improve the motor vehicle accident experience of the industry.

The program is built around the Fleet Safety Contest conducted yearly by the National Safety Council. It is aimed at bringing about a uniformity of statistical information on fleet records of the gas industry and the establishment of standards within the industry to form the basis for analysis and recommendations for corrective action.

SEEKS RATE INCREASE

Natural Gas Pipeline Company of America, of Chicago, Illinois, has filed a proposed \$10,702,000, or 27 per cent, annual wholesale gas rate increase with the Federal Power Commission. The increase, which the company proposes to make effective October 1, would effect 17 wholesale customers in Kansas, Illinois, Indiana, and Wisconsin. It would be in addition to a \$7,210,000 annual increase which was suspended by the FPC last November but since January 1 has been in effect, subject to refund.

Natural Gas based its new filing partly on the proposed increase in the cost of gas purchased from Colorado Interstate Gas Company, of Colorado, Springs, Colorado. Colorado's proposed increase recently was suspended by the FPC pending hearing and decision. Natural's proposed increase also is based on the substitution of value for its own-produced gas in lieu of the actual cost of its production, and on the higher cost of gas from new sources of supply.

The proposed increase is now under study by the Commission's staff.

* * *

NEW FPC MAP ISSUED

The Federal Power Commission has announced that it has issued a June 30, 1954, revision of its map of "Major Natural Gas Pipe Lines" in the United States. The map supersedes the December 31, 1953 edition. The map is approximately 13 by 19 inches in size and is printed in four colors on a scale of 165 miles per inch. It shows major existing pipe lines, those which are under construction or have been authorized but not yet started, and proposed lines which are pending before the Commission.

* * *

MERGER IS AUTHORIZED

The Federal Power Commission has authorized the merger of Coast Counties Gas and Electric Company into Pacific Gas and Electric Company. Coast Counties is a subsidiary of Pacific Gas and both companies have main offices in San Francisco.

CITIES SERVICE PLAN OKAYED

The Federal Power Commission has authorized Cities Service Gas Company, of Oklahoma City, Oklahoma, to construct a total of 33 miles of natural gas transmission lines in Kansas and Missouri to replace existing facilities.

Cities Service will construct 24 miles of 26-inch pipe in Franklin and Johnson Counties, Kansas, to replace two existing 16-inch lines, and build nine miles of 20-inch line in Cherokee and Jasper Counties, Missouri, to replace an existing 16-inch line.

The company said that the new facilities are needed primarily to replace aged pipelines, unsafe to operate at the higher pressures required for continuing operations, and to increase the delivery capacity of its system serving the Kansas City Springfield, Missouri, areas.

Total estimate of the project is \$1,860,500, of which \$227,500 represents the cost of reclaiming the existing lines.

* * *

ALABAMA-TENNESSEE SEEKS LINE

Alabama-Tennessee Natural Gas Company, of Florence, Ala., has filed an application with the Federal Power Commission requesting authority to construct a total of about 25 miles of pipeline, an additional 350 horsepower in compressor capacity, and a new meter station on its natural gas transmission system in Alabama and Mississippi.

Total estimated cost of the construction is \$808,450. The company said that the proposed construction would provide capacity to deliver the additional supply of natural gas required for the orderly development of the distribution systems which purchase gas from Alabama-Tennessee.

The project includes 21.2 miles of 12 $\frac{3}{4}$ inch pipe in Colbert County, Ala.; 3.7 miles of 8 $\frac{5}{8}$ inch line near Tusculumbia, Ala.; an additional 350-horsepower compressor unit and an existing station near Muscle Shoals, Ala.; and a meter station near Corinth, Miss. In addition, the company asked permission to abandon and remove about 5.5 miles of existing 8 $\frac{5}{8}$ inch line in the Muscle Shoals area.

TEXAS EASTERN WOULD RETIRE PART OF ITS 'LITTLE INCH'

The Federal Power Commission has announced that it has accepted for filing the application of Texas Eastern Transmission Corporation, of Shreveport, La., proposing to retire part of its "Little Inch" pipeline system from natural gas service and to construct new facilities to enable it to continue to provide service as presently being rendered.

Texas Eastern plans to retire that portion of the Little Inch system located between Baytown, Tex., and Moundsville, W. Va., and to convert it to the transportation of petroleum products. Gas now being moved through the Little Inch system would be transported by means of the new facilities which the company proposes to build.

The proposed new facilities, which have a total estimated cost of \$71,814,000, would include about 481 miles of pipeline, 86,900 horsepower in new compressor stations, and 36,020 additional horsepower at existing stations. The new pipeline and compressor facilities would be located in Texas, Louisiana, Mississippi, Tennessee, Kentucky, Ohio, Pennsylvania and Alabama. The project would include a 382-mile line from Beaumont, Tex., to Kosciusko, Miss.

The portion of the Little Inch system which would be retired to Kosciusko, Miss., and converted to the transportation of petroleum products includes about 1168 miles of pipeline, five compressor stations, and part of the capacity at 16 other compressor stations. Texas Eastern said that the reconverted "Little Inch" line would be operated as a common carrier petroleum products pipeline pursuant to provisions of the Interstate Commerce Act and subject to jurisdiction of the Interstate Commerce Commission.

Upon completion of the proposed new facilities, the application said, Texas Eastern's system will have the flexibility which it now lacks, and will be in a position to transport to the East gas gathered from fields in the Southwest through either the Big Inch, the Texas Gas Transmission Corporation system, or Texas Eastern's proposed Kosciusko (Miss.) line. The system also would have

substantial potential capacity at no increase in the average cost of service, Texas Eastern said.

The Little Inch line, which generally parallels Texas Eastern's Big Inch line, is now transporting to the approximately 200 million cubic feet of gas per day, Texas Eastern stated. The company said that the line is operating at structural capacity and is a system bottleneck from Castor, La., to Little Rock, Ark.

* * *

TEMPORARY PERMIT ISSUED

A temporary permit has been issued by the Federal Power Commission to The Ohio Fuel Gas Company, of Columbus, Ohio, for the construction of a total of about 46 miles of pipeline and 3,000 additional compressor horsepower on its natural gas transmission system in Ohio.

The new facilities will enable Ohio Fuel to receive additional natural gas from its affiliate, United Fuel Gas Company, of Charleston, W. Va. Both companies are Columbia Gas System subsidiaries. Total estimated cost of the construction is \$3,832,700.

The additional line will be located in Jackson, Vinton, Hocking and Fairfield, counties, Ohio, and the additional compressor horsepower will be installed at an existing station in Fairfield County. Ohio Fuel's deliveries from United Fuel are to increase to an average of about 256 million cubic feet of gas per day next February, and the new facilities are designed to help transport part of the additional gas.

THANKS TO ADVERTISING

Advertising, the magic key to America's great productivity, not only makes possible far more news and entertainment than even the rich could buy 50 years ago, but helps to educate us, the Chamber of Commerce of the United States points out. Only a few of our grandparents could travel to the concert halls to hear the great of their day. In our times, Lilly Pons, Ezio Pinza and Jascha Heifitz are frequent visitors to our homes via the airways while advertising foots the bill.



Guys who keep getting lit aren't too bright.

Some people talk so fast they say things they haven't thought of yet.

Minister, announcing a special service: "Come early if you want a back seat."

To prepare the third grade for a trip to some nearby California missions, Miss Smith was describing the outstanding features of Spanish design.

Puzzled little faces reflected unanswered questions, so she asked the youngsters, "Who can tell us what a patio is?"

Johnny, age eight, finally volunteered: "I'm not sure, but I think it's Spanish for bathroom!"

Now that President Eisenhower has bought a farm near Gettysburg, Pennsylvania, will the farm become famous as Eisenhower's Gettysburg address?

On the first day of school the teacher explained that if anyone had to go to the washroom he should hold up two fingers. One puzzled little boy plaintively asked: "How's that going to help?"

Wife (to husband after several fast rounds of drinks at a party) "Don't take another cocktail. Your face is already getting blurred."

Policeman: "Have you any explanation for wandering about at this time of night?"

Reveller: "Look here, if I had an explanation I'd have gone home to the wife hours ago!"

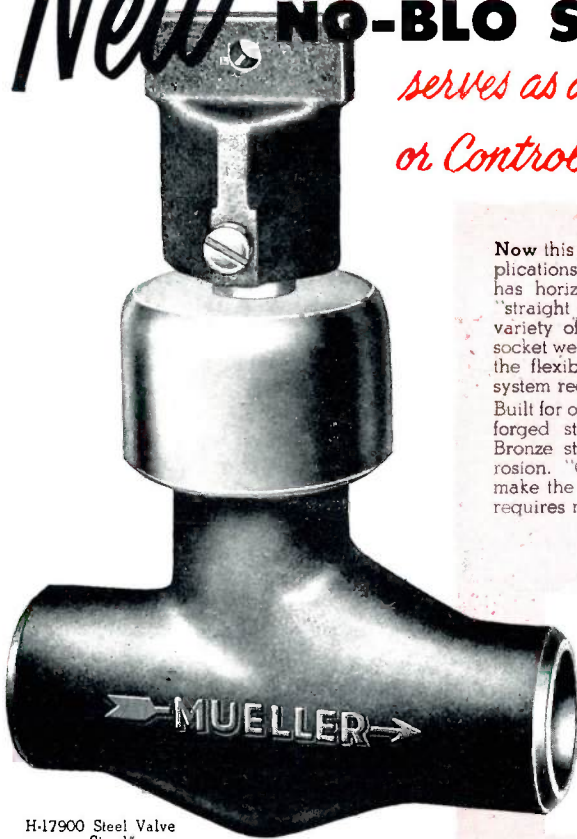
After a vacation there's nothing like the feel of a good desk under your feet.

MUELLER®

New

NO-BLO STEEL VALVE

*serves as a Curb Stop, Meter Stop
or Control Valve*



H-17900 Steel Valve
— Size 1"

To obtain more information on the Steel Valve and Capped Steel Valve, consult your Mueller Representative or write direct.

MUELLER CO.

Dependable Since 1857

MAIN OFFICE & FACTORY DECATUR, ILLINOIS

Now this one fitting is adaptable to all these applications. The new Mueller No-Blo Steel Valve has horizontal inlet and outlet — allows easy "straight line" connections. Available with a variety of inlet and outlets (1" butt weld, 3/4" socket weld, 3/4" inside I.P., 1" outside I.P.), it has the flexibility to meet all types of distribution system requirements.

Built for operating pressures up to 1200 psig, the forged steel body has a heavy-duty Silicon Bronze stem which is highly resistant to corrosion. "O" ring seals around stem and cap make the Steel Valve permanently leakproof — requires no maintenance.

H-17950 Capped
Steel Valve — Size 1"



The Capped Steel Valve is another new addition to the Mueller No-Blo line. Carrying the same features as the Steel Valve, the Capped Steel Valve employs an unique "O" ring inner valve mechanism concealed under the cap, making it virtually "tamperproof". This feature makes it perfectly suited for outside meter settings or other exposed locations.